

CULPEPER, VA

**EAST COAST**

*Longhorn  
Classic*

**SEPT. 21<sup>ST</sup> & 22<sup>ND</sup>, 2018**

CULPEPER, VA

FRIDAY 7PM

SATURDAY 11AM

**HOSTED BY:**

G&G Longhorns and 5D Ranch

**THIS IS YOUR CATALOG.**

**PLEASE BRING IT WITH YOU TO THE SALE!**



# SNIPER'S STORY

# G&G



**SNIPER** DOB: 2/23/2012

703 RHF SHARP SHOOTER X K.C. WINTER QUEEN  
SERVICE SIRE TO ALL THREE CONSIGNMENTS



SHE SELLS WITH  
SUNHAVEN FISTFULL!

**RUSTIC PATRIOT** DOB: 3/31/2018

CHEROKEE AKA TSA-LA-GI X SUNHAVEN FISTFULL 62



LOT # 16

**SUNHAVEN FISTFULL 62**

DOB: 6/3/2012

WF GRAVENSTEIN X SUNHAVEN DOUBLE FISTED  
TTT: 80.875" ON 6/28/2018



LOT # 33

**HL COW PATTY** DOB: 1/8/2011

COWBOY CHEX X BL PATTY SUE  
TTT: 82.5" ON 6/28/2018



LOT # 46

**RZ EASY MONEY** DOB: 8/27/2010

JP RIO GRANDE X ROUNDUP'S WENDY

ANN GRAVETT  
ROCHELLE, VA

[WWW.GANDGTEXASLONGHORNS.COM](http://WWW.GANDGTEXASLONGHORNS.COM)



BEAR DAVIDSON  
OFFICE 540.788.4894  
CELL 540.687.0050



# Welcome

We want to welcome everyone to the first East Coast Longhorn Classic. This sale has developed into what it is this first year for a few reasons. One of the main reasons is the steady growth and enthusiastic participation that the market has seen East of the Mississippi. New breeders are getting involved in cattle on many levels and are vastly increasing the quality of their cattle at a pace we haven't seen in years. This causes an increase in supply of quality cattle all across the country that people are looking for, and we wanted to give those breeders an economical way to promote those cattle. Decades ago when Tyson Leonard, Paul Babington, and Ben Gravett started producing Longhorn sales on the Eastern side of the United States, their goal was to give the breeders a place to market their cattle. We want to continue to do that today. And with the influx of new breeders, we want to continue the relationships that exist because of these cattle. For seven years, G&G hosted its Fall Roundup and had some great support. The new ranch isn't conducive to that event anymore so, after looking at some options and the development of the programs, we thought that a sale would be a fun way to go about continuing the part. The regions outside the hub of Texas and Oklahoma don't have events going on every weekend in the spring and fall. There are really only a few a year. Outside of our own events, our next closest here in VA is the Southeastern Futurity 11 hours away and the Wisconsin Sale 14 hours away. We wanted to create that gathering atmosphere and a good time again, once more, before winter.

We're also continuing the tradition of a futurity with the sale. This has been an overwhelming addition to the East coast, conjuring up a tremendous amount of support. From entries to the sponsorships, we can't thank you enough.

We can't thank everyone enough who have supported this event thus far. If you look through this book you'll see some amazing cattle. We asked these consignors to dig deep and, when they showed us a pending consignment we told them, "I think you got better. We want to showcase your cattle." And they dug deeper. Like we continue to say, this sale belongs to all those wanting to grow these east coast markets. Its success is derived from the industry's participation. Look at the amount of ads run and look at the small sale size. Why's that matter? People didn't want to put in anything but what they were proud to give. They wanted to put their best in.

And of course we can't forget our sponsors. The East Coast Longhorn Classic took the idea of a sponsor very seriously. For many events, this is just a donation. We tried to spice things up a bit with 0% commission for our sponsors. We wanted there to be as much value for their dollar as possible. And, we hope, more value than their dollar. We even had two corporate sponsors in John & Christine Talley and Joel & Rebecca Miner who had no consignments but still wanted to support the event.

Our goal is to continue to help develop the Longhorn market and help grow these regional markets as best as possible. We can't do it and wouldn't dream of doing it without you.

Sincerely, *Ann Gravett, Dan Huntington & Bear Davidson*

## PROVEN GENETICS & CONSISTENCY



100 PERCENT  
(DAM)



FIFTY-FIFTY BCB  
(MATERNAL GRAND SIRE)



COWBOY CATCHIT CHEX  
(SIRE)



BL RIO CATCHIT  
(PATERNAL GRAND DAM)



COWBOY CADENCE  
(SERVICE SIRE)



HORSESHOE J CADENCE  
(DAM OF SERVICE SIRE)



# Schedule of Events

## THURSDAY, SEPTEMBER 20TH, 2018

8am-5pm- Futurity Cattle and Sale Cattle arrive.

\*Please make special arrangements if you cannot work within this time frame.\*

## FRIDAY, SEPTEMBER 21ST, 2018

8am-3pm- Sale Cattle Arrive

12 noon- East Coast Longhorn Futurity & Calcutta

5pm- Virginia Pig Roast held at the Sale barn Sponsored by the East Coast Longhorn Classic Sale

7pm- Futurity Awards followed by the East Coast Longhorn Classic Showcase heifer sale.

## SATURDAY, SEPTEMBER 22ND, 2018

11am- East Coast Longhorn Classic

### HOTEL LOCATIONS:

#### Culpeper, VA

Ask for the Longhorn Sale rate

Quality Inn- 540-825-4900

Red Roof Inn- 540-825-8088

#### Warrenton, VA

Roughly 25 mins from sale barn

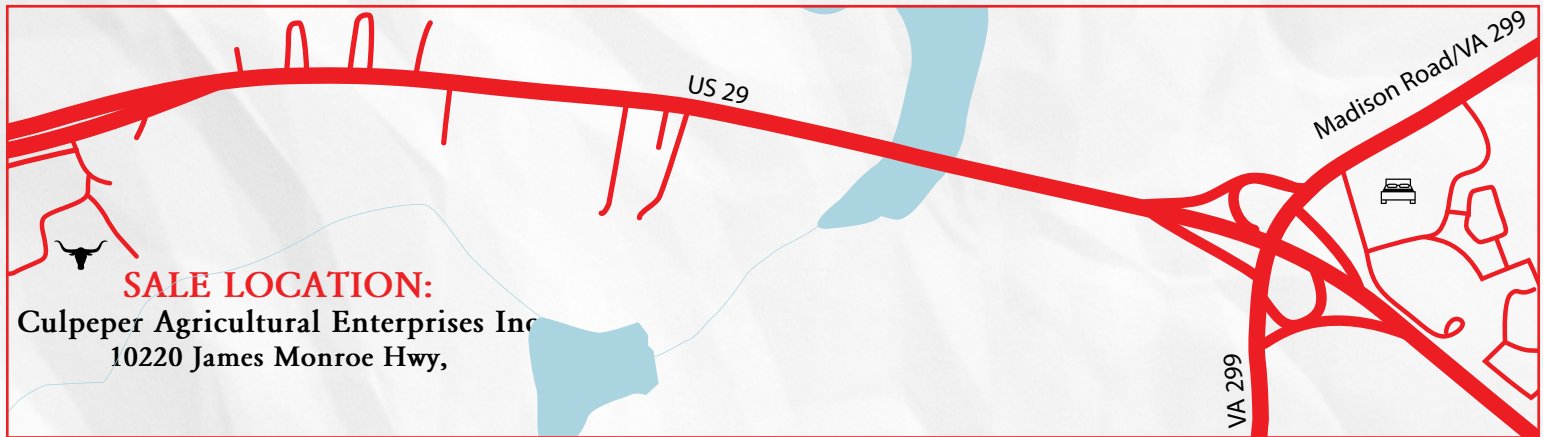
Holiday Inn- 540-341-3461

Hampton Inn-540-349-4200

#### Ruckersville, VA

Roughly 25 mins from sale barn

Holiday Inn- 434-985-1855



### HOSTS

Ann Gravett

Dan Huntington, 715.853.7608

Bear Davidson, 540.687.0050

### SALE COORDINATOR

Bear Davidson

### OFFICE STAFF

Seasons Pequignot

### AUCTIONEER

Dan Huntington

VA License #2907004502

### COMMENTARY

Chase Vasut

### RINGMEN

Jay Wachter

Shawn Pequignot

### ONLINE BIDDING

Hired Hand Live

[www.HiredHandLive.com](http://www.HiredHandLive.com)

Molly Clubb, 319.269.8903

Jaymie Feldmann, 319.239.2662

Internet Viewing & Bidding Courtesy of Hired Hand Live, a Product of Hired Hand Software.

Go to [www.HiredHandLive.com](http://www.HiredHandLive.com) and follow the prompts to either log in (if you've used our system before) or become a registered bidder.

We recommend using the internet browsers Chrome or Firefox, not Safari.

Bidders are required to register for each sale they wish to participate in. Viewers are not.

A Credit Card is required for online verification but will not be billed. Upon notification that you've placed a winning bid on an animal, the sale will invoice you with mailing instructions for payment by check, wire transfer or money order. You can place absentee and max bids if you are unable to be online live during the sale. These bids are NOT seen by anyone other than Hired Hand staff and are placed automatically by our system to purchase the animal at the lowest price possible for you.

To also join Hired Hand's Mobile Marketing List and receive text updates of sale prices and buyers please text "website.longhorns" to the number "779-48."

There is no fee to participate and no buyer's premium. Internet buyers are responsible for coordinating their own hauling.

All terms and conditions listed in the sale catalog apply to on-line bidding. All announcements from the Auctioneer take precedence over anything posted on-line. The Auctioneer always has final say in all bidding disputes.

Contact Molly Clubb, Hired Hand, for additional assistance: 319-269-8903 or [molly@hiredhandsoftware.com](mailto:molly@hiredhandsoftware.com).



# HL COW PATTY



LOT #33

DOB: 1/8/11  
Cowboy Chex x  
BL Patty Sue

BRED TO SNIPER

82.5" TTT

## WHAT A COMBINATION!



**SNIPER**  
Service Sire  
DOB: 2/23/12 | 84.75"TTT  
703 RHF Sharp Shooter  
x K.C. Winter Queen  
Owned w/ Debbie Bowman



DOB: 9/3/17  
Sired by  
Grande  
Safari Chex  
Owned w/  
Roy & Beth  
Landers

Offspring  
**CLASSIFIED**



DOB  
10/29/16  
Sired by  
Top Caliber  
54.75" TTT  
at 19.5 mo.

Offspring  
**RUSTIC PATTY**

**ALLEN RANCH**  
URSULA ALLEN  
- HARPER, TX

**BENTWOOD RANCH**  
RICHARD & JEANNE FILIP  
FAYETTEVILLE, TX

**G&G LONGHORNS**  
ANN GRAVETT  
ROCHELLE, VA





CONSULTING  
D4



**Elah Valley Longhorns**  
Fred & Cheryl Bryant, MO



**G&G Longhorns**  
Ann Gravett, VA



**G&P Longhorns**  
Gary & Pamela Liddell, TX



**Gilliland Ranch**  
Dr. Mark & Charlene Gilliland, KS



**Brett Ranch**  
Brian & Suzanne Brett, TX



**Circle Double C**  
Chris & Christine Clark, TX



**Craft Ranch**  
Lane & Les Craft, TX

# Thank You

**TO ALL CURRENT CUSTOMERS!**



**Wolf Hollow Longhorns**  
Roy & Patty Armstrong, TX



**Rockin HIL Ranch**  
Tucker & Carrie Hilbert, KS



**Three Creeks Ranch**  
Reid & Sharon Garfield, TX



**KDK Longhorns**  
Kent Mayes & Janet Harman, TX



**Lago Haven Ranch**  
Dale & Linda Smith, TX



**Talley Longhorns**  
John & Christine Talley, MD



**Timber Creek Longhorns**  
Mark Keever, TX

**Bear Davidson**  
www.eastwindcattle.com

2921 Jacks Shop Rd  
Rochelle, VA 22738  
540.687.0050  
beardavidson@gmail.com



# EAST COAST GIRLS

**LOT #3**

## **PRINCESS VIOLET**

Hubbells 20 Gauge x CCC Pokey Shadow

DOB: 5/20/2016

TTT 55.125" on 6/19/2018



**LOT #20**

## **VIRGINIA COWGIRL 1/15**

Guts and Glory x Star Shooter

DOB: 4/5/2015

TTT 61.25" on 1/20/2018



**BRED TO BOTH CONSIGNMENTS**

## **HIL 5 SULLEY**

JH Rurally Screwed x Bell Hop

DOB: 6/22/2016

TTT 37.6875 on 7/7/2017



**DAN AND KRISTI GROVE**

252-373-2926

Dan@GroveCattle.com

6164 Old Smithfield

Bailey, NC 27807

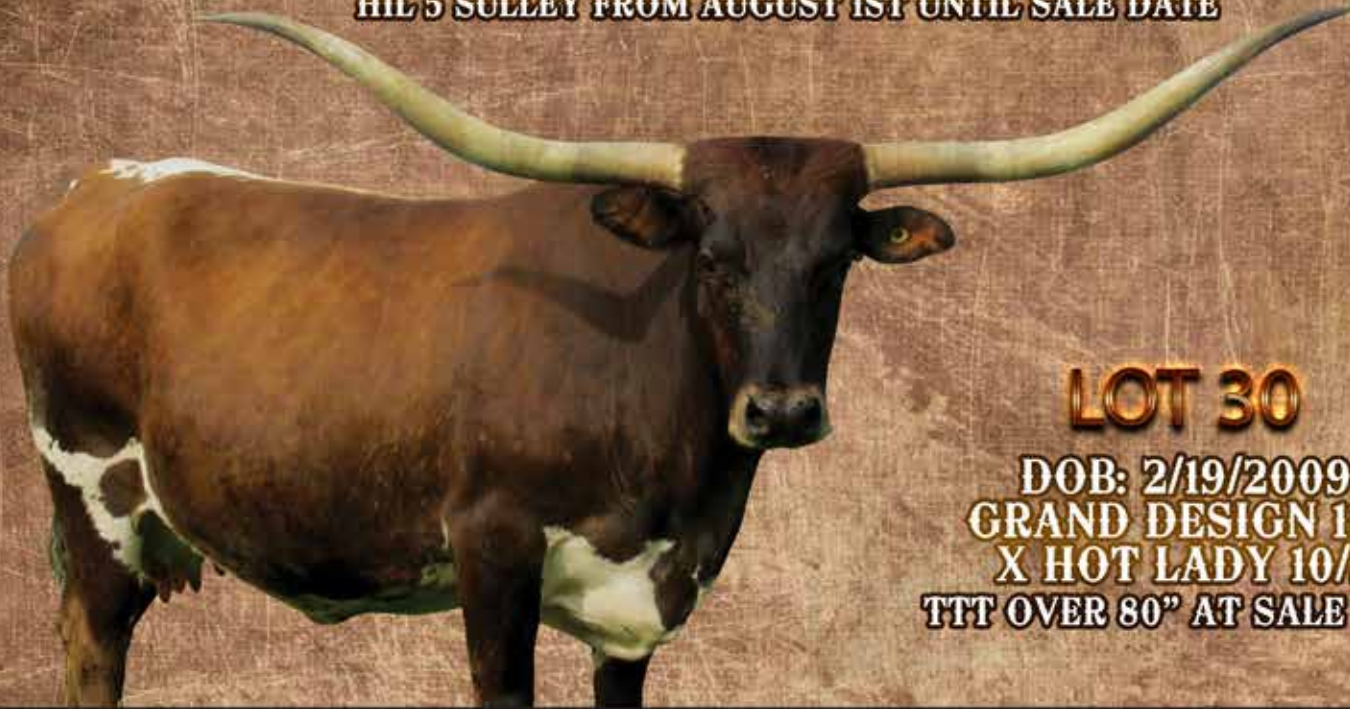


VIEW OUR OTHER ANIMALS AT  
GROVECATTLE.COM



# 3-IN-1 PACKAGE

BULL CALF AT SIDE BY CHEROKEE AND EXPOSED BACK TO  
HIL 5 SULLEY FROM AUGUST 1ST UNTIL SALE DATE



**LOT 30**

DOB: 2/19/2009  
GRAND DESIGN 11/5  
X HOT LADY 10/3  
TTT OVER 80" AT SALE TIME

## TP BROWN SUGAR

### CHEROKEE AKA TSA-LA-GI

DOB: 10/28/2013

COWBOY TUFF CHEX X EOT CHERRYPICKER'S LEWEZE

TTT: 70.25" ON 2/18/2017



Justin & Adrienne Henry | 304.283.1974

doublelonghorns@gmail.com | www.doublelonghornranch.com



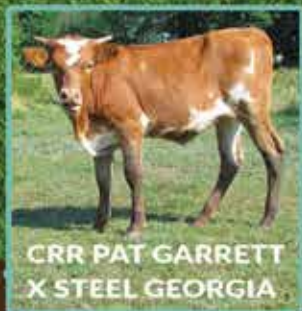


CEDAR ROCK  
RANCH

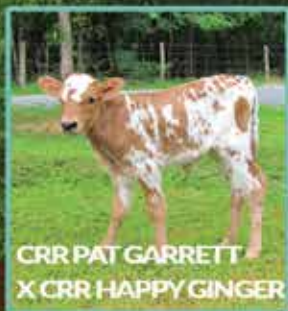
# CRR PAT GARRETT



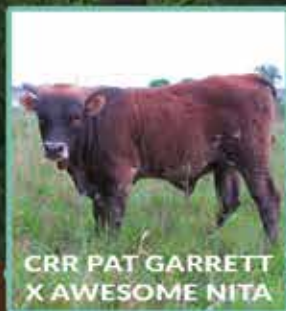
**DOB: 8/5/2015**  
**SIRE: CLEAR WIN**  
**DAM: TEXAS WHISKY**  
**TTT: 73-1/8" ON 6/4/18**  
**SEMEN AVAILABLE!**



CRR PAT GARRETT  
X STEEL GEORGIA



CRR PAT GARRETT  
X CRR HAPPY GINGER



CRR PAT GARRETT  
X AWESOME NITA

JOEL & REBECCA MINER  
(607) 592-3940



CEDAR ROCK  
RANCH

13760 CUMBERLAND HWY  
ORRSTOWN, PA 17244

[WWW.CEDARROCKRANCHPA.COM](http://WWW.CEDARROCKRANCHPA.COM)



www.carolinacartellonghorns.com

# CAROLINA CARTEL



Lot #43

## Carolina Flush

DOB: 4/8/2014  
WF Poker x Blancos Isabelle



Lot #21

## JH Ringers Lady

DOB: 3/30/2013  
Ring Leader BCB x JH Lady Like  
TTT: 79"+



Lot #14

## Carolina Jackpot

DOB: 5/24/2016  
Money In The Bank Chex x Carolina Flush



Lot #31

## Horseshoe J Memorable

DOB: 9/18/2013  
Fifty-Fifty BCB x Horseshoe J Idea

Khaos Cattle Company  
Ken & Jessica Morris  
khaoslonghorns@gmail.com

Double A Longhorns  
Aaron Adkins & Clay Adkins  
doublealonghorns@gmail.com

White Pine Ranch  
Scott & Sandie Hughes  
shughes@partonlumber.com





# TCC HOUDINI



Extraordinary Service Sire of Lots 24 & 29



7/1/14

RHF SHARP SHOOTER  
X HR RIO ROSE

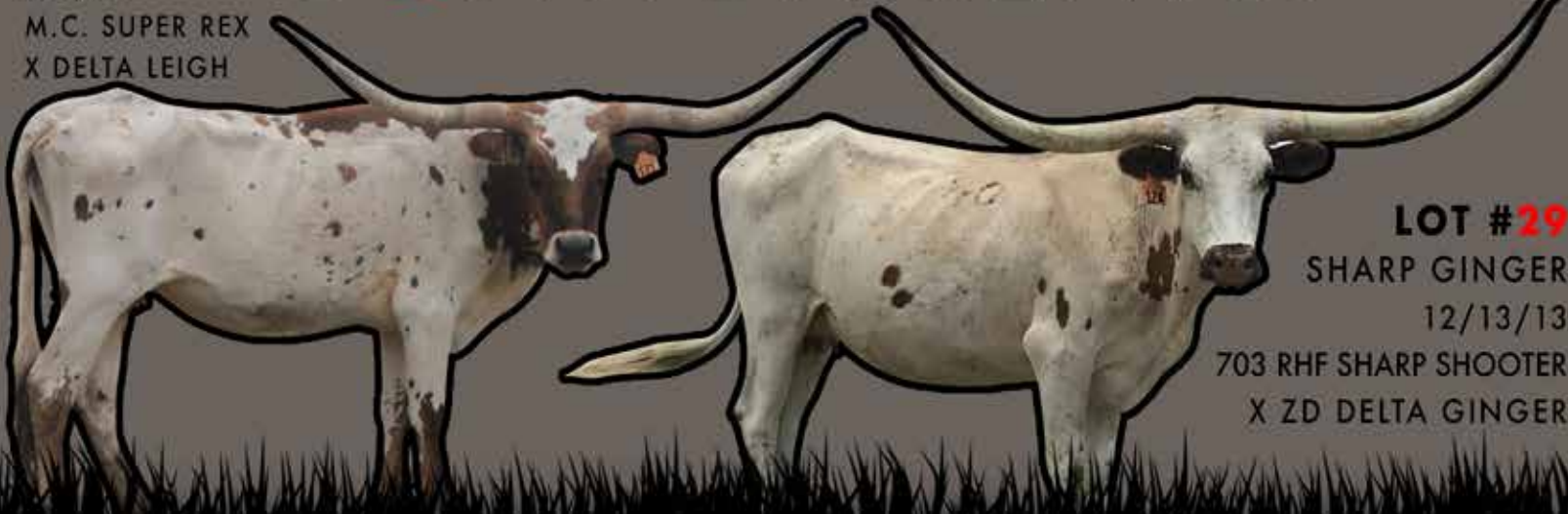
91.5" TTT AND  
108.5" TH ON 7/11/18

**SEMEN FOR SALE**  
Owned with Deer Creek Longhorns

**LOT #24**  
REXY LEIGH  
3/9/12

M.C. SUPER REX  
X DELTA LEIGH

## CONSIGNMENTS:



**LOT #29**

SHARP GINGER  
12/13/13

703 RHF SHARP SHOOTER  
X ZD DELTA GINGER





# RHF CASANOVA COWBOY

LOT 34

## J&R'S LITTLE GINNY

DOB:5/20/08

J&R's Enterprise x Wiregrass Virginia

TTT: 73" on 5/2/2018



DOB:5/20/13  
CV Cowboy Casanova  
x Sunhaven Smith Mellow  
TTT: 80" on 2/8/2018  
Service Sire to J&R's Little Ginny



## MAC & HOLLY STEWART

919-235-8417

sleepyhollowlonghorns@gmail.com

181 Longhorn Lane

Coats, NC 27521



## SLEEPY HOLLOW

LONGHORNS

# Jubilees Legacy

LOT #13  
DOB: 3/30/16  
General Lee x  
Sittin Legacy



Grand Dam  
86.75" TTT

*Redman5's Legacy*



## Sink Longhorns

[www.SinkLonghorns.com](http://www.SinkLonghorns.com)

JARED SINK

336-978-5500 | [sinklonghorns@yahoo.com](mailto:sinklonghorns@yahoo.com)





LOT # 22  
**LADY REX**

**REX'S RED ROSE  
HALF-SISTER!**

80" TTT 5 YEAR OLD  
ON 6/16/18



DOB: 9/6/13  
M.C. SUPER REX  
X SITTIN LADY



LOT # 10  
**HEIFER EMBRYO  
SWAGGER BCB  
X K.C. DIAMOND JUBILEE**

DUE 2/2/19  
CARRIED BY SUNHAVEN DELTA DOLL



**CRAZY  CATTLE CO.**

SHAWN AND SEASONS PEQUIGNOT  
WELLSVILLE, PA | 717-577-3347  
CRAZYCATTLECOMPANY@YAHOO.COM



# Consignors

## 2Bar2 Ranch

Pat Ivicic  
Austin, TX  
[www.2bar2ranch.com](http://www.2bar2ranch.com)  
Lot #7

## 5D Ranch

Dan and Denise Huntington  
Gresham, WI  
[www.5DRanch.org](http://www.5DRanch.org)  
Lot #1, 40, 45

## Allen Ranch, Bentwood Ranch, G&G Longhorns

Allen/Filip/Gravett Partnership  
Lot #33

## Bilgrien Cattle Company

Dave Bilgrien  
Cambridge, WI  
Lot #15, 44

## Carolina Cartel

Ken & Jessica Morris - Aaron Adkins &  
Clay Adkins - Scott & Sandie Hughes  
Monroe and Rutherfordton, NC  
[www.CarolinaCartelLonghorns.com](http://www.CarolinaCartelLonghorns.com)  
Lot #14, 21, 31, 43

## Craft Ranch

Lane & Les Craft  
Houston, TX  
[www.CraftRanchLonghorns.com](http://www.CraftRanchLonghorns.com)  
Lot #24, 29

## Crazy Cattle Company

Shawn and Seasons Pequignot  
Wellsville, PA  
[www.CrazyCattleCompany.com](http://www.CrazyCattleCompany.com)  
Lot #10, 22

## Double H Ranch

Justin and Adrienne Henry  
Falling Waters, WV  
[www.DoubleHLonghornRanch.com](http://www.DoubleHLonghornRanch.com)  
Lot #30

## E&L Texas Longhorn Farms

Jerry Loveday  
Dandridge, TN  
[www.EandLTexasLonghornFarms.com](http://www.EandLTexasLonghornFarms.com)  
Lot #23

## G&G Longhorns

Ann Gravett  
Rochelle, VA  
[www.GandGTexasLonghorns.com](http://www.GandGTexasLonghorns.com)  
Lot #16, 46

## Gary Hershberger

Dundee, OH  
Lot #38

## Grove Cattle Company

Dan and Kristi Grove, and Leah Grove  
Bailey, NC  
[www.GroveCattle.com](http://www.GroveCattle.com)  
Lot #3, 35

## Home Branch Ranch

Ricky McLeod  
Manning, SC  
[www.HomeBranchRanch.com](http://www.HomeBranchRanch.com)  
Lot #9, 18, 41

## Hudson Longhorns

Bill and Elizabeth Hudson  
Corydon, IN  
[www.HudsonLonghorns.com](http://www.HudsonLonghorns.com)  
Lot #6, 37

## J&J Longhorns

John King  
Port Royal, PA  
[www.JandJLonghorns.com](http://www.JandJLonghorns.com)  
Lot #11

## Leonard Ranch

Tyson Leonard  
Galax, VA  
[www.leonardlonghornfarms.com](http://www.leonardlonghornfarms.com)  
Lot #12, 20

## M&M Cattle Company

Mark, Misty, Madison, Lane and Logann  
Flinchum  
Copper Hill, VA  
[www.MandMCattleCompany.com](http://www.MandMCattleCompany.com)  
Lot #2, 36

## Pine Brothers Longhorns

Dave and Luke Pine  
Columbia City, IN  
[www.PineBrothersLonghorns.com](http://www.PineBrothersLonghorns.com)  
Lot #32

## Rockin AF

Vasut Family  
Elgin, TX  
[www.RockinAFLonghorns.com](http://www.RockinAFLonghorns.com)  
Lot #28

## Rockin Hil Ranch

Duke Hilbert  
Bennington, KS  
[www.RockinHilLonghorns.com](http://www.RockinHilLonghorns.com)  
Lot #26

## Rolling D Ranch

Nancy C. Dunn  
Eclectic, AL  
[www.RollingDRanch.com](http://www.RollingDRanch.com)  
Lot #25

## Shady Creek Ranch

Greg and Nicky Gilley  
Mosheim, IN  
[www.ShadyCreekLonghorns.com](http://www.ShadyCreekLonghorns.com)  
Lot #5, 27

## Sink Longhorns

Jared Sink  
Midway, NC  
[www.SinkLonghorns.com](http://www.SinkLonghorns.com)  
Lot #13

## Sleepy Hollow Longhorns

Mac and Holly Stewart  
Coats, NC  
[www.SleepyHollowLonghorns.com](http://www.SleepyHollowLonghorns.com)  
Lot #34

## Sunhaven Farms

Jay and Suzi Wachter  
Keymar, MD  
[www.SunhavenLonghorns.com](http://www.SunhavenLonghorns.com)  
Lot #8, 17, 42

## TL Longhorns

Tom and Linda Nading  
Oswego, KS  
[www.TLLonghorns.com](http://www.TLLonghorns.com)  
Lot #19

## White Pines Ranch

Scott & Sandy Hughes  
Rutherfordton, NC  
[www.WhitePinesRanch.com](http://www.WhitePinesRanch.com)  
Lot #4, 39



# Sponsors

## Corporate Sponsors

John & Christine Talley  
Talley Longhorns, MD

Joel & Rebecca Miner  
Cedar Rock Ranch, PA

## Patron Sponsors

Allen, Filip,  
Gravett Partnership

Jerry Loveday  
E&L Texas Longhorns, TN

John King  
J&J Longhorns, PA

Dan & Kristi Grove  
Grove Cattle Co, NC

Jay & Suzi Wachter  
Sunhaven Farms, MD

Shawn & Seasons Pequignot  
Crazy Cattle Co, PA

## Why the yellow highlights?

We wanted to be different and create a new feature to your standard sale catalog. Each of the yellow highlighted animals are over 80" TTT. Thanks to Hired Hand, we were able to track down many of these measurements. And, although we're well aware that there are many great cows under 80" TTT, we wanted to give some extra promotion to the consignments who pulled from the heart of their herds. Thank you to each and every consignor!

## TAKE YOUR PROGRAM TO THE NEXT LEVEL...



WITH OFFSPRING  
LIKE THESE!



**WS VINDICATOR**  
DOB: 8/18/2013 • AUSTIN TEXA 260 X WS SUN STAR  
81.75" TTT • Semen \$250/straw

**HUDSON  
LONGHORNS**

WWW.HUDSONLONGHORNS.COM  
Mike Willinger 502-379-1049



**LEONARD  
LONGHORN FARMS**  
WWW.LEONARDLONGHORNFARMS.COM



# Lucky's Princess

DOB: 12/2/2012

TCC LUCKYS REFLECTION x PRINCESS EDGE

TTT: 71.125" on 03/01/2018

EXPOSED TO VOODOO COWBOY

LOT #28



ROCKIN' AF RANCH

The Vasut Family | Chase: 512-917-8654 | [www.RockinAFLonghorns.com](http://www.RockinAFLonghorns.com)



# SUNHAVEN HEADS SOUTH TO THE EAST COAST LONGHORN CLASSIC

Lot #8

## Sunhaven Patchit

DOB: 10/15/2016

Hubbells 20 Gauge x BL Patchit

50" TTT @ 21 months

Won her class at the 2018 Cherry Blossom Futurity!



Lot #17

## Sittin Grand Prize

DOB: 10/2/2015

Sittin Bull x J.R. Prize 115 (over 80" TTT!)

Bred to JP Rio Grande



Lot #42

## Hubbells Rio Gleam

DOB: 7/9/2010

JP Rio Grande x Hubbells Miss Gleam

Over 70" TTT

Bred to 20 Gauge



Jay and Suzi Wachter

301-252-1966

[sunhavenfarm@yahoo.com](mailto:sunhavenfarm@yahoo.com)

12357 Legore Road

Keymar, MD 21757

[WWW.SUNHAVENLONGHORNS.COM](http://WWW.SUNHAVENLONGHORNS.COM)

**SUNHAVEN FARM**  
*Jay & Susan Wachter*



# HOME BRANCH RANCH



Lot #18  
**HBR PLUM TUFF**  
DOB: 4/12/14  
Cowboy Tuff Chex x BL Sugar Plum 844



Lot #41  
**SPECKLE IRON**  
DOB: 4/10/11  
Drag Iron x Sandhill Speckle



Lot #9  
**HBR BC GRAND**  
DOB: 7/28/17  
Bwana Chex x 7 Bar Grand Iron

**RICKY MCLEOD, HOME BRANCH RANCH**

4823 Home Branch Road, Manning, SC 29102  
Phone: (803) 983-0816 | Email: [wrricky@ftc-i.net](mailto:wrricky@ftc-i.net)

**WWW.HOMEBRANCHRANCH.COM**



WE ARE LOOKING FORWARD TO THE CALVES OUT OF THESE  
**GREAT PRODUCING BULLS!**



**BUBBA TUFF CHEX**

DOB: 4/10/13

Cowboy Tuff Chex X BL Rio Gizzy 933

Owned by Talley Longhorns and



**DELTA LUCKY ACE**



DOB: 10/30/13

LLL Lucky X LLL Delta Dawn

Owned by Hoosier Longhorns



Contact Christine  
Phone: 410- 842-7282  
Email: [christine@talleymetals.com](mailto:christine@talleymetals.com)

John and Christine Talley  
20406 Benevola Church Road  
Boonsboro, MD 21713

Contact John  
Phone: 301-704-6091  
Email: [john@talleymetals.com](mailto:john@talleymetals.com)



**J&J  
LONGHORNS**

# EMBRYO PACKAGE!

A CONFIRMED PREGNANCY AND A GUARANTEED HEIFER EMBRYO IN A RECIPIENT OR A HEIFER CALF THAT HAS ALREADY BEEN BORN. UPDATES WILL BE SENT OUT A MONTH OR SO BEFORE THE SALE



**DAM  
HUBBELLS RIO GORGEOUS III**

DOB: 4/11/11  
JP RIO GRANDE X  
DH GUMAN'S LIL' SIS  
TTT: 80"



**SIRE  
HUBBELLS 20 GAUGE**

DOB: 5/22/12  
CONCEALED WEAPON X  
HUBBELLS RIO GLORY  
TTT: 84"



**GORGEOUS DELIGHT  
OFFSPRING OF HUBBELL RIO GORGEOUS**

DOB: 4/9/17  
SIRE: RR BULLNANZA  
TTT: 35" ON 6/3/18

**JOHN KING  
PORT ROYAL, PA  
717-953-7449 - JGLENK@GMAIL.COM  
WWW.JANDJLONGHORNS.COM**



# BIG HORNED PRODUCER

**LOT #27**

## SUNHAVEN SMITH MELLOW

**DOB: 9/13/2010**

Sunhaven Smithsonian x  
Sunhaven Mellow Yellow

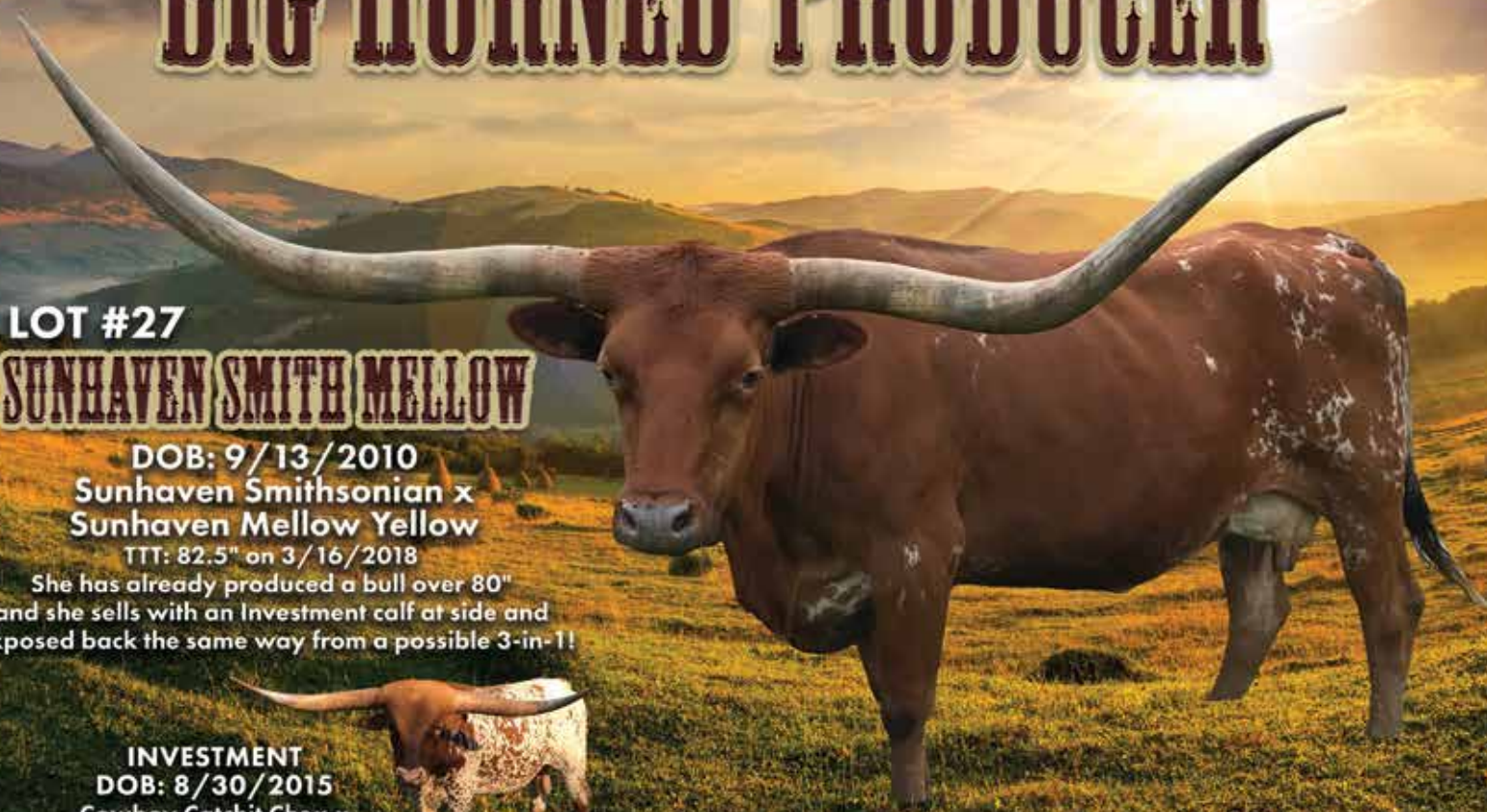
TTT: 82.5" on 3/16/2018

She has already produced a bull over 80"  
and she sells with an investment calf at side and  
exposed back the same way from a possible 3-in-1!

**INVESTMENT**

**DOB: 8/30/2015**

Cowboy Catchit Chex x  
Horseshoe J Legible  
2x Horn Showcase winner



**LOT #5**

## GW TUFF STRAWBERRY

**DOB: 11/22/2017**

Cowboy Tuff Chex  
101.25" TTT - World Record



Cowboy Chex



BL Rio Catchit



Awesome  
Martin Luther



Awesome  
Strawberry



Awesome Martina PC171  
Near 80" TTT



Awesome Trixie  
Daughter of  
Awesome Martin Luther.  
One of the longest horned cows in the breed 98.5" TTT



**GREG, NICHOLE, AUSTIN, BEAUX  
& GRADY GILLEY**  
MOSHEIM, TN 37818  
641-660-2362







## **CV CASANOVAS MAGNUM**

**DOB: OCTOBER 11, 2012**

**CV COWBOY CASANOVA X HUBBELLS RIO TAFFY III**

**TTT - 91.25"**

**2017 HORN SHOWCASE BRONZE WINNER**

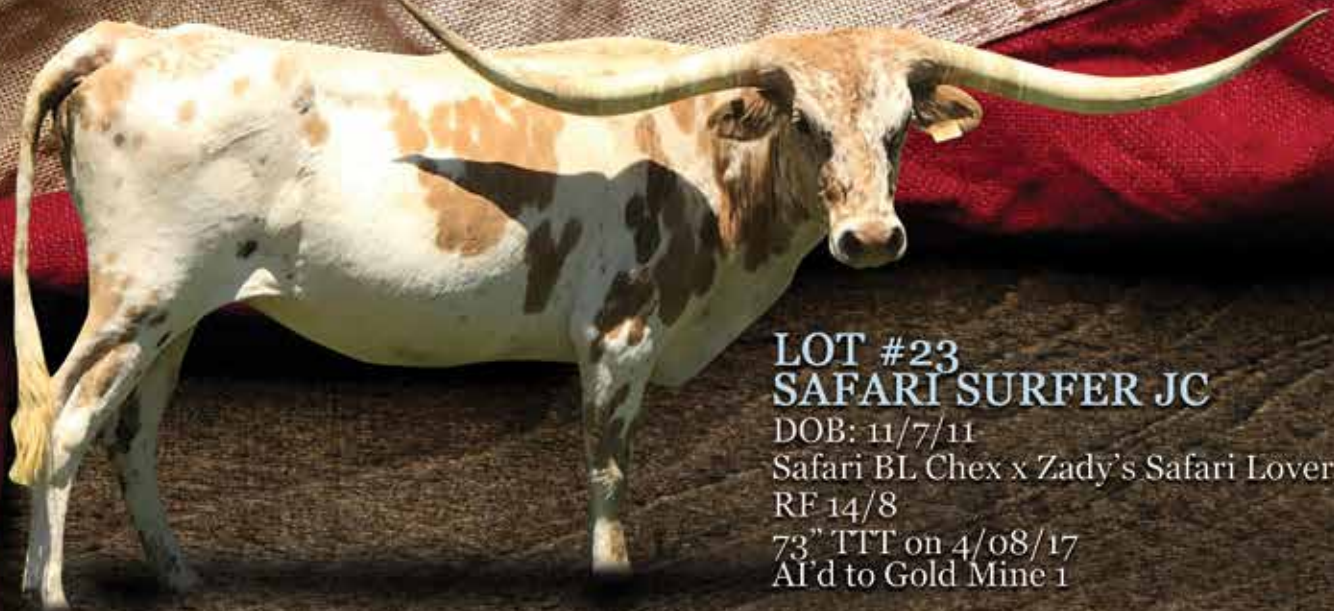


# **2BAR2RANCH**

**[www.2bar2ranch.com](http://www.2bar2ranch.com) • [info@2bar2ranch.com](mailto:info@2bar2ranch.com)**  
**Austin, Texas**



# LOT #23: AI'D TO STAND OUT!



**LOT #23**  
**SAFARI SURFER JC**  
DOB: 11/7/11  
Safari BL Chex x Zady's Safari Lover  
RF 14/8  
73" TTT on 4/08/17  
AI'd to Gold Mine 1

## **EAST COAST BREEDERS:**

**TAKE A HARD LOOK AT THIS COW'S BREEDING.  
SHE'S BEEN SELECTIVELY AI'D TO GOLD MINE 1.**

**THERE WERE ONLY A FEW GOLD MINE CALVES IN EAST COAST PASTURES  
IN 2018 AND 7 EAST COAST COWS AI'D TO HIM FOR 2019 CALVES!**



## **GOLD MINE 1**

DOB: 3/18/15  
Cowboy Catchit Chex x 2A Daisy Duke  
82.375" TTT on 3/17/18

# **E** LONGHORNS

**JERRY LOVEDAY**

865-274-7795

JEL0865@AOL.COM

**WWW.EANDLTEXASLONGHORNFARMS.COM**



**SEPT. 21, 2018**  
**7:00 PM**

**Friday**  
**Sale**

**BID ON-LINE: WWW.HIREDHANDLIVE.COM**

**1**

## **AML TOMMY KAY'S SHADOW**

5D Ranch, Dan & Denise Huntington



**DOB:** 6/12/2016

**PH#:** 608 **REG:** CI304427

**BREEDING:** Exposed to **HL LINCOLN** from 6/20/2018 to Sale Date

**COMMENTS:** What a beautiful young heifer! 20 Gauge on the top side Hubbell's breeding on the bottom with great VJ Tommie and Shadow. I really wanted to keep this awesome heifer for my program but needed to bring something awesome for the East Coast Classic!

**SIRE:** HUBBELLS 20 GAUGE (CONCEALED WEAPON X HUBBELLS RIO GLORY)

**DAM:** HUBBELLS TOMMIE KAY (VJ TOMMIE (AKA UNLIMITED) X 96 HUBBELLS SHADOW KAY)

**2**

## **MM PRETTY TUFF DARLING**

M&M Cattle Company, Mark & Misty Flinchum



**DOB:** 5/13/2016

**PH#:** 68 **REG:** CI308523

**BREEDING:** Exposed to The Profit from 6/16/18 to 9/21/18

**COMMENTS:** Tuff Darling is bred for horn and color! She is exposed to The Profit who is the most consistent bull I've ever seen. This pairing is some of the most cutting edge, double bred Jamakizm combined with Tuff!

**SIRE:** HE'S PRETTY TUFF (COWBOY TUFF CHEX X BL RIO PRETTY 048)

**DAM:** MM DARLING VAN HORNE (VAN HORNE TEXA X MM NIGHT DARLING)



# PRINCESS VIOLET

Grove Cattle Company, Leah Grove



**DOB:** 5/20/2016      **PH#:** 606 **REG:** PENDING  
**BREEDING:** Exposed to Hil 5 Sulley from 4/22/18 to 9/21/18

**COMMENTS:** Beautifully colored, deep bodied, gentle. What more could you ask for? Oh yea, she measured 53.5" TTT on her second birthday. If you're into predictions, that's over 80" and she hasn't started the later horn explosion 20 gauge heifers are becoming known for! Sells bred to Hil 5 Sulley (JH Rurally Screwed x Bellhop)

**SIRE:** HUBBELLS 20 GAUGE (CONCEALED WEAPON X HUBBELLS RIO GLORY)  
**DAM:** CCC POKEY SHADOW (WF POKER X WIZ'S SHADOW)



# WPR DO WA DIDDY

White Pines Ranch, Scott & Sandy Hughes



**DOB:** 2/12/2017      **PH#:** 1/7 **REG:** CI309782  
**BREEDING:** Exposed to Cowboy Catchit Chex from 5/4/18 to 7/1/18

**COMMENTS:** Look at this horn set. Most gentle out of all the heifers. Treat her nice, she will love you for it. Her dad has 80" TTT plus. Best Casanova son I know of. Mother is a big horn pet.

**SIRE:** BULLETPROOF 311 (CV COWBOY CASANOVA X CV TIGER'S SPIRIT)  
**DAM:** 2A BLANCOS MYRTLE (RIO BLANCO CHEX X WPR LADY SLIPPER)



# GW TUFF STRAWBERRY

Shady Creek Ranch, Greg and Nicky Gilley



**DOB:** 11/22/2017      **PH#:** 741 **REG:** CT1310968  
**BREEDING:** Sells unexposed.

**COMMENTS:** Super nice Heifer out of Cowboy Tuff Chex! The longest horn bull in the breed 100" TTT. She is out of a big horned Panther Creek bred cow Awesome Martina PC171 ( 77" TTT ) Her two grandmothers are BL Rio Catchit and Awesome Strawberry. She will be nice addition to any breeding program.

**SIRE:** COWBOY TUFF CHEX (COWBOY CHEX X BL RIO CATCHIT)  
**DAM:** AWESOME MARTINA PC171 (AWESOME MARTIN LUTHER X AWESOME STRAWBERRY)





**6**

## HL MELANIE BETH

Hudson Longhorns, Bill & Elizabeth Hudson



**DOB:** 4/3/2017      **PH#:** 3/17      **REG:** C1309469  
**BREEDING:** Sells unexposed.

**COMMENTS:** HL Melanie Beth is a very correct HL Red Barron daughter. She measured 31" TTT on her first birthday and looks like she is going to mature into an excellent longhorn cow. We wanted to put something good in the fall East Coast Sale- so here she is!

**SIRE:** HL RED BARON (COWBOY CHEX X BL PATTY SUE)  
**DAM:** HUBBELLS RIO BEJEWEL (JP RIO GRANDE X JOKER'S JEWEL)

**7**

## 2BAR2 CRISTAL

2bar2 Ranch, Pat Ivicic



**DOB:** 3/16/2017      **PH#:** 07      **REG:** C1304719  
**BREEDING:** Sells unexposed.

**COMMENTS:** 2bar2 Ranch is pleased to offer our first public consignment at the East Coast Longhorn Classic. 2bar2 Cristal is sired by CV Casanovas Magnum. Currently, Casanovas Magnum holds the official second place TTT position with the 2017 HSC measurement of 91.5" (TH Measurement of 101.625"). 2bar2 Cristal measured 36.375" TTT on 5/23/18. New measurement announced on sale date. Beautiful, complete package combining great bloodlines, confirmation, and color...From the "Heart of Texas" to Virginia!

**SIRE:** CV CASANOVAS MAGNUM (CV COWBOY CASANOVA X HUBBELLS RIO TAFFY III)  
**DAM:** AWESOME CRYSTAL PC189 (AWESOME ALAMO X OVERLY FANCY)

**8**

## SUNHAVEN PATCHIT

Sunhaven Farms, Jay & Suzi Wachter



**DOB:** 10/15/2016      **PH#:** 96      **REG:** PENDING  
**BREEDING:** Sells unexposed.

**COMMENTS:** This is truly a special heifer out of Hubbells 20 Gauge and the one and only Loomis bred BL Patchit, grandmother to the longest horned cow in the breed, BL Rio Catchit. Sunhaven Patchit won the Cherry Blossom Futurity.

**SIRE:** HUBBELLS 20 GAUGE (CONCEALED WEAPON X HUBBELLS RIO GLORY)  
**DAM:** BL PATCHIT (VJ TOMMIE (AKA UNLIMITED) X HATCHET)



## HBR BC GRAND

Home Branch Ranch, Ricky McLeod



**DOB:** 7/28/2017      **PH#:** 708      **REG:** C1308243  
**BREEDING:** Sells unexposed.

**COMMENTS:** Here's a heifer that we're proud to have our brand on. There's not a hair out of place on her. You want to be competitive in the Futurity circuit? Here's your heifer. You want to have a great brood cow? Here's your heifer. You want something that is going to wow your customers in your pasture? This is your girl. Sired by Bwana Chex (out of the gorgeous twisty horned brindle Safari Sue) and out of a beautiful brindle daughter of Drag Iron on the bottom side, I would have bet this heifer would have been born brindle. It'll be crazy to see what color she produces herself.

**SIRE:** BWANA CHEX (DRAG IRON X BL SAFARI SUE)  
**DAM:** 7 BAR GRAND IRON (DRAG IRON X RCR SEBS GRAND ANNET)



## SWAGGER X KC DIAMOND JUBILEE HEIFER EMBRYO

Crazy Cattle Company/KB Cattle, Pequignot/Bollinger Partnership



**DOB:**                      **PH#:** PENDING      **REG:** PENDING  
**BREEDING:** Sells unexposed.

**COMMENTS:** We dug deep into our embryo program for the ECLC. This is a guaranteed heifer from Swagger BCB and KC Diamond Jubilee. Jubilee should be 80" by the sale. Do your homework on her production. This should be an outstanding cross. To top it off she's implanted in a registered cow from Sunhaven Farms outstanding breeding program!

**SIRE:** SWAGGER (JP RIO GRANDE X RINGA DINGER)  
**DAM:** K.C. DIAMOND JUBILEE (HUNTS DUPLICATE COPY X K.C. JUBILEE)



## HUBBELLS 20 GAUGE X HUBBELLS RIO GORGEOUS HEIFER EMBRYO

J&J Longhorns, John King



**DOB:**                      **PH#:** PENDING      **REG:** PENDING  
**BREEDING:** Sells unexposed.

**COMMENTS:** An exciting opportunity to add some powerful genetics, color, and size to someone's program. J&J Longhorns is offering a heifer embryo package out of the 80" TTT Hubbells Rio Gorgeous III and the 84" 20 Gauge bull. Take a good long look at the pedigree on this package.

**SIRE:** HUBBELLS 20 GAUGE (CONCEALED WEAPON X HUBBELLS RIO GLORY)  
**DAM:** HUBBELLS RIO GORGEOUS (JP RIO GRANDE X DH GUNMAN'S LIL' SIS)







## LTL DELTA SAFARI

Leonard Farms, Tyson Leonard



**DOB:** 6/7/2016

**PH#:** 611 **REG:** CI300997

**BREEDING:** Exposed to **WS Vindicator** from 6/15/18 to 9/15/18

**COMMENTS:** Delta is a colorful heifer that is sure to be a top producer in every aspect. She has a pedigree full of some of the top Longhorns in the industry today. Her sire, Delta Lucky Ace (by LLL Lucky and a full sister to the \$61,000 **Delta Lucky Lady**) was a multiple class winner at several of the top futurities. Her dam is also a past TTT class winner at the HSC and the LWC who sold for over \$40,000. She sells exposed for her first calf to WS Vindicator, owned in partnership with Bill Hudson. Bear asked me to bring a top female from my program and here she is. She has the pedigree, color, and disposition to complement any program.

**SIRE:** **DELTA LUCKY ACE** (LLL LUCKY X LLL DELTA DAWN)

**DAM:** **RML HONEYSUCKLE SAFARI** (GRANDE SAFARI CHEX X SDR RIOS HONEY)



## JUBILEES LEGACY

Sink Longhorns, Jared Sink



**DOB:** 3/30/2016

**PH#:** 63 **REG:** PENDING

**BREEDING:** Exposed to **RC Bootlegger** from 10/3/17 to 2/17/18 and Yoda from 3/11/18 to 5/7/18

**COMMENTS:** Beautiful young heifer out of General Lee (LC 585 Warbonnet x KC Jubilee) She is showing great horn shape and length. Her dam is a Sittin Bull x the great over 80" TTT Redman's Legacy who produced a 90" son. She's been exposed to an over 80" TTT Jamakizm son and our young Yoda bull. Breeding status will be announced at the sale.

**SIRE:** GENERAL LEE (LC 585 WAR BONNET X K.C. JUBILEE)

**DAM:** SITTIN LEGACY (SITTIN BULL X **REDMAN5'S LEGACY**)



## CAROLINA JACKPOT

Carolina Cartel



**DOB:** 5/24/2016

**PH#:** 6/2 **REG:** CI302858

**BREEDING:** Exposed to Tuff It Out from 7/1/17-12/1/17 and Tuff It Out from 3/3/18-8/1/18

**COMMENTS:** A really fancy young cow that won't disappoint. Out of our best producing family. She combines Cowboy Tuff Chex with our famous Izzie cow. Bred to a huge horned son of Cowboy Tuff Chex. Imagine the possibilities. Raise your hand high.

**SIRE:** MONEY IN THE BANK CHEX (**COWBOY TUFF CHEX** X **BL SAFARI SUE**)

**DAM:** CAROLINA FLUSH (**WF POKER** X **BLANCOS ISABELLE**)



**MAXES MISS BCC**  
Bilgrien Cattle Company, Dave Bilgrien



**DOB:** 4/6/2016      **PH#:** 5    **REG:** CI311651  
**BREEDING:** Breeding information at sale date

**COMMENTS:** For this inaugural event, I wanted to put in my best. Here she is. Maxes Miss has horn, size, color, and pedigree. She measured 61.5" on 5/15/2018, and has been blowin' out the horn ever since. When people come to visit, she's the one they ask about. With her flash, she will be a front pasture cow for years. I will have breeding information and current horn measurement on sale date.



**SIRE:** J&R'S MAXED OUT (MAXIMUS ST X LLL MARTHA)  
**DAM:** 7LS MAXIE MISS (MAXIMUS ST X 7LS MISS SUNSHADE)

**SEPT. 22, 2018**  
**11:00 AM**

**BID ON-LINE: WWW.HIREDHANDLIVE.COM**

**SUNHAVEN FISTFUL 62**

G&G Longhorns, Ann Gravett



**DOB:** 6/3/2012      **PH#:** 62    **REG:** 260310  
**BREEDING:** Exposed to **Sniper** from 6/25/18 to 9/21/18

**COMMENTS:** We wanted to put a great one in for the first lot. We've always admired this breeding. On the top side you have a full genetic brother to **Top Caliber** and Sittin Bull. On the bottom side you go back to one of our greatest producing cows, Double Fistful. She's over 80" TTT and with a heifer calf at side by Cherokee (**Cowboy Tuff** x EOT Cherrypicker's Leweze). She's exposed back to Sniper, our over 84" TTT bronze winning bull owned with Debbie Bowman, for a 3 in 1 package. Heifer calf at side DOB: 6/3/2018



**SIRE:** WF GRAVENSTEIN (HUNTS COMMAND RESPECT X SAGE HEN 02)  
**DAM:** SUNHAVEN DOUBLE FISTED (SHADOW'S REFLECTION X DOUBLE FISTFUL)



**17**

## SITTIN GRAND PRIZE

Sunhaven Farms, Jay & Suzi Wachter



**DOB:** 10/2/2015      **PH#:** 66    **REG:** 20048  
**BREEDING:** JP Rio Grande- Al'd on 12/20/17 and Exposed to Sunhaven Quigley- 1/16/18 to 7/8/18

**COMMENTS:** This is a very correct heifer with a lot of horn. A Sittin Bull daughter out of an over 80" dam owned by Craft Ranch. Al'd to Rio and then put in with Sunhaven Quigley for a fall calf.

**SIRE:** SITTIN BULL (HUNTS COMMAND RESPECT X HASHBROWN)  
**DAM:** J.R. PRIZE 115 (J.R. PREMIUM X J.R.TREASURE)

**18**

## HBR PLUM TUFF

Home Branch Ranch, Ricky McLeod



**DOB:** 4/12/2014      **PH#:** 425    **REG:** CI290517  
**BREEDING:** Exposed to JH Monika's Sun from 11/15/17 to 3/15/18

**COMMENTS:** Straight off the Home Branch Ranch sired by the longest horned bull in the world who sold for \$165,000 and out of a Rio daughter going back to Farlap Chex, arguably one of the best producing Butler bulls out there. Look at Loomis' success breeding Rio to Butler, this is where he got the horn explosion from. She's been exposed to JH Monika's Sun for a fall 2018 calf. He was over 80" TTT before his 3rd birthday. That would give this calf's pedigree one 100", one 90", and six 80" animals.

**SIRE:** COWBOY TUFF CHEX (COWBOY CHEX X BL RIO CATCHIT)  
**DAM:** BL SUGAR PLUM 844 (JP RIO GRANDE X BL WHELMING SUGAR 502)

**19**

## RRR MISS WENDY 051

TL Longhorns, Tom & Linda Nading



**DOB:** 6/2/2010      **PH#:** 051    **REG:** 255882  
**BREEDING:** Exposed to Ronnie 5 from 4/21/18 to 9/1/18

**COMMENTS:** OCV'd & Johnes tested, Wendy is a really easy keeper. No holes found in this cow. Picture is of her 2018 bull calf by Ronnie 5. Bred back the same way. Buy with confidence on this cow.

**SIRE:** RIO BRAVO CHEX (JP RIO GRANDE X BL SUNSHINE TARI)  
**DAM:** WATSON 409 (BAR LAZY D BLUE BUCKAROO X WATSON 206)



## LTL HOT SPICE

Leonard Farms, Tyson Leonard



**DOB:** 4/12/2013      **PH#:** 32      **REG:** C1289793  
**BREEDING:** Exposed to **WS Vindicator** from 6/15/18 to 9/15/18

**COMMENTS:** Spice has been a consistent producer and a good mother. She is a solid cow with a respectable pedigree. Sired by Jim Atwell's RHF Hot Sauce Shooter (by RHF Sharp Shooter and a half sister to the \$75,000 Sweet Maxi heifer) and out of a Hot Shot's Toro daughter. She sells exposed to the Hudson/Leonard partnership bull WS Vindicator.



**SIRE:** RHF HOT SAUCE SHOOTER (703 RHF SHARP SHOOTER X RHF CAYENNE)  
**DAM:** LTL FIREFLY (HOT SHOT'S TORO X BET I CAN FLY)

## JH RINGERS LADY

Carolina Cartel



**DOB:** 3/30/2013      **PH#:** 389      **REG:** C290075  
**BREEDING:** Exposed to **Cowboy Catchit Chex** from 5/4/18 to 7/15/18

**COMMENTS:** Get on board people! She's more than a trophy. We have a heifer that will win horn contests this fall. We are keeping her 2018 bull. Gentle, good milker, just a 5 year old. Close to 80" now.



**SIRE:** RING LEADER BCB (WORKING MAN CHEX X RINGA DINGER)  
**DAM:** JH LADY LIKE (BL JIM CHEX X BL LADY JILL)

## LADY REX

Crazy Cattle Company, Shawn & Seasons Pequignot



**DOB:** 9/6/2013      **PH#:** 13/13      **REG:** 264067  
**BREEDING:** Announced at sale

**COMMENTS:** Lady Rex is one of those special cows we all look for. She has a pedigree that is the best you can ask for. She will be over 80" TTT by five years old, being the second generation of 80" TTT along with her dam. Her sire and dam have produced other top notch offspring. This is consistency at its finest.



**SIRE:** M.C. SUPER REX (SUPER BOWL X J.R. OPUS)  
**DAM:** SITTIN LADY (SITTIN BULL X XP LADY BLACK)



**23**

## SAFARI SURFER JC

E&amp;L Texas Longhorn Farms, Jerry Loveday



**DOB:** 11/7/2011      **PH#:** 12/1      **REG:** PENDING  
**BREEDING:** Gold Mine 1 - AI'd on 6/20/18

**COMMENTS:** This cow is line bred BL night Chex and Butler breeding, Farlap Chex. She's got everything in her pedigree that I look for in a cow. It's hard to let her go. Her horns swoop and measure in the mid 70s. A current measurement will be available for the sale. Being AI'd to the Goldmine bull who has produced some futurity winners and measures over 80" TTT at 36 months.

**SIRE:** SAFARI BL CHEX (FARLAP CHEX X NIGHT SAFARI BL833)  
**DAM:** ZADY'S SAFARI LOVER FR 14/8 (SAFARI BL CHEX X ZADY)

**24**

## REXY LEIGH

Craft Ranch, Lane &amp; Les Craft



**DOB:** 3/9/2012      **PH#:** 48      **REG:** 268169  
**BREEDING:** Exposed to TCC Houdini from 11/1/17 to 2/9/18 and RHF Sharp Shooter from 6/5/18 to 8/25/18

**COMMENTS:** Great Super Rex daughter. She's a half sister to the 97" TTT 3x Ultimate Cow, Rex's Red Rose. She's been exposed to two serious bulls. Houdini is a bull who crossed over the 90" TTT mark and RHF Sharp Shooter who produced the likes of Houdini, HB Patton, and Sniper to name a few. This cow goes back to Johnnie Hoffman breeding on the bottom side with VJ Tommie and the Dixie Hunter bull. Great package here.

**SIRE:** M.C. SUPER REX (SUPER BOWL X J.R. OPUS)  
**DAM:** DELTA LEIGH (REVENUE 108 X DELTA DARLENE)

**25**

## DUNN DID IT

Rolling D Ranch, Nancy C. Dunn



**DOB:** 10/13/2014      **PH#:** 418      **REG:** CI294629  
**BREEDING:** Exposed to Cowboy Cadence from 3/10/18 to 9/1/18

**COMMENTS:** Extra special genetic package! Sired by Cowboy Catchit Chex and out of an outstanding daughter of Fifty-Fifty BCB. This brindle beauty has 71 inches TTT of beautiful rolling horns and is from one of my most consistent producing families. Her first calf is a gorgeous brindle heifer which will be retained as her replacement. She will be exposed back to Cowboy Cadence, a huge brindle grandson of the famous 90 inch Royal Reputation. Updated measurement, pregnancy status and Johnes test results provided at sale.

**SIRE:** COWBOY CATCHIT CHEX (COWBOY CHEX X BL RIO CATCHIT)  
**DAM:** 100 PERCENT (FIFTY-FIFTY BCB X DUNN DEL RIO BEST)



# LVR DAILY TWINKLE STAR

Rockin Hil Ranch, Duke Hilbert



**DOB:** 11/9/2012      **PH#:** 1251      **REG:** 264152  
**BREEDING:** Exposed to HL Mutual Fund from 6/10/18 to Sale Date

**COMMENTS:** Big bodied cow in her prime. Close to 80" with a TON of total horn and just as much pedigree power. She is exposed to HL Mutual Fund (WS Jamakizm X Horseshoe J Journey) for a spring calf.



**SIRE:** RJF LONE STAR TEJAS (TEJAS STAR X HUBBELL'S RIO LINDA TAG 2)  
**DAM:** PPF DAILY GOSSIP (PPF GUN MAKER X MORE THAN ENOUGH)

# SUNHAVEN SMITH MELLOW

Shady Creek Ranch, Greg & Nicky Gilley



**DOB:** 9/13/2010      **PH#:** 140      **REG:** C1278759  
**BREEDING:** Exposed to INVESTMENT from 7-9-2018 thru Sale

**COMMENTS:** Huge Beautiful Sunhaven bred cow that is a PRODUCER !! She has a 80" TTT son (RHF Casanova Cowboy) and we have three knockout heifers at home out of her. She will be bred back to two time HSC bronze winner .. INVESTMENT. No holes in this cows. 82.5 TTT in March. Bull calf at side DOB: 4/18/2018



**SIRE:** SUNHAVEN SMITHSONIAN (J.R. GRAND SLAM X ROYAL CLASS GAL)  
**DAM:** SUNHAVEN MELLOW YELLOW (PB MR. CHARLIE X GRIEGO GOLD LUANNE)

# LUCKY'S PRINCESS

Rockin' AF, Vasut Family



**DOB:** 12/2/2012      **PH#:** 11      **REG:** C1281882  
**BREEDING:** Should be calving to Hoot SRC in June. Exposed to Voodoo Cowboy from 7/1/18 to sale date

**COMMENTS:** We are thrilled to be offering "Lucky" this year to the inaugural East Coast Classic Sale. She has been a foundation animal for us. Take a look at that breeding! LLL Lucky, WS Jamakizm, Hunts Command Respect....She is bred perfectly for an outcross on any Rio Blood! She has produced great for us and in a multiple time futurity champion. She is over 70" TTT with a ton of total horn. Don't miss your chance to add these valuable genetics to your herd. To top it off she should have a calf at side and will be bred back to our Futurity and Bronze Winning Cowboy Catchit son, VooDoo Cowboy. Keep your hands up on this one!



**SIRE:** TCC LUCKYS REFLECTION (LLL LUCKY X BH DAZZLE'S RED)  
**DAM:** PRINCESS EDGE (RRR JAGGED EDGE 616 X ZD BUZZ SAWS PRINCESS)



**29**

## SHARP GINGER

Craft Ranch, Lane & Les Craft



**DOB:** 12/13/2013      **PH#:** 40      **REG:** 268161  
**BREEDING:** Exposed to **TCC Houdini** from 11/1/17 to 2/9/18

**COMMENTS:** Awesome package here sired by RHF Sharp Shooter (87.5" TTT Top Caliber x Burning Daylight) and out of a huge 1200lb Boomerang daughter out of JMC Phenomenal Abigail. Sharp Ginger was 72" TTT+ back in June and has been growing about 4" a year. She should cross over that 80" mark. She's bred to Houdini, who was over 90" TTT. This should be a great opportunity to add some awesome genetics to your herd.

**SIRE:** RHF SHARP SHOOTER (TOP CALIBER X BURNIN DAYLIGHT)  
**DAM:** ZD DELTA GINGER (BOOMERANG C P X JMC PHENOMENAL ABIGAIL)

**30**

## TP BROWN SUGAR

Double H Ranch, Justin & Adrienne Henry



**DOB:** 2/19/2009      **PH#:** 22/9      **REG:** CI271737  
**BREEDING:** Exposed to Hil 5 Sulley from 7/21/18 to 9/21/18

**COMMENTS:** Here is your chance for a big time parker brown cow with over 80" TTT and likely the biggest frame in the field. She stays in great condition year round. This is a very hard cow to sell and will be very difficult to replace. She will be the standout in most pastures! Bull calf at side DOB: 4/26/2018

**SIRE:** GRAND DESIGN 11/5 (ROUNDUP X SLAM DUNK)  
**DAM:** HOT LADY 10/3 (KING OF CLUBS X HOT SAUCE 55/9)

**31**

## HORSESHOE J MEMORABLE

Carolina Cartel



**DOB:** 9/18/2013      **PH#:** 13/1      **REG:** CI289633  
**BREEDING:** Exposed to Money In The Bank Chex from 8/1/17 to 9/16/17 and **Enevitable** from 10/1/17 to 12/15/17

**COMMENTS:** Here is a unique opportunity. Memorable comes from one of the most respected programs in the industry. Jimmy Jones is known for his proven and predictable genetics. This cow is a perfect example of that combining the great 50/50 and a daughter of Horseshoe J Charm. Sit back and watch those horns roll.

**SIRE:** FIFTY-FIFTY BCB (BANDERA CHEX X RINGALING BCB)  
**DAM:** HORSESHOE J IDEA (RIO BRAVO CHEX X HORSESHOE J CHARM)



# RHF SHARP GINGERETTE

Pine Brothers Longhorns, Dave & Luke Pine

32

**DOB:** 4/24/2010      **PH#:** 004 **REG:** CI268646  
**BREEDING:** AI'd to **Hubbells 20 Gauge** in June and Exposed to CV Casanova's Darknight from 7/1/18 to 9/21/18

**COMMENTS:** This colored up large framed cow has a knockout pedigree. Double generations of 80" TTT on the top side followed up with a 75" TTT dam. We are retaining a beautiful replacement heifer that has laid back horns. Check for more info at pinebrotherslonghorns.com

**SIRE:** RHF SHARP SHOOTER (TOP CALIBER X BURNIN DAYLIGHT)  
**DAM:** ZD DELTA GINGER (BOOMERANG C P X JMC PHENOMENAL ABIGAIL)



# HL COW PATTY

33

Allen Ranch, Bentwood Ranch, G&G Longhorns, Allen/Filip/Gravett Partnership

**DOB:** 1/8/2011      **PH#:** 10/11      **REG:** 257697  
**BREEDING:** Exposed to **Sniper** from 6/25/18 to 9/21/18

**COMMENTS:** HL Cow Patty is a storied cow in the industry. The day Ben, Richard, and John were bidding on her will live on as one of the greatest sales ever. She's been a great producer with us selling two heifers out of her for \$19,000 and \$15,000. We retained a **Top Caliber** heifer and a Grande Safari Chex bull by her. She is one of the cleanest cows you'll find. She's an ITLA Championship Futurity winner as well as winning the LWC in the same year. Quiet cow, great milker, absolutely gorgeous. Bred to Sniper for a spring 2019 calf. We haven't let one go like this in a long time. But all the partners wanted to support this new sale.

**SIRE:** COWBOY CHEX (PEACEMAKER 44 X BL POCO BUENO)  
**DAM:** **BL PATTY SUE** (JP RIO GRANDE X BL FARLAPS PEGGY SUE)



# J&R'S LITTLE GINNY

Sleepy Hollow Longhorns, Mac & Holly Stewart

34

**DOB:** 5/20/2008      **PH#:** 8/8 **REG:** 250854 (ITLA)  
**BREEDING:** Exposed to RHF **Casanova Cowboy** (CV Cowboy Casanova x Sunhaven Smith Mellow) from 5/2/18 to 08/01/2018

**COMMENTS:** Ginny is a nice, big bodied cow with some excellent foundation breeding. She measured 73" TTT on 5/2/18. She is easy to work and be around in the pasture. She is an excellent mother and milks great! She is exposed to RHF Casanova Cowboy who is 80' TTT who is a son of CV Cowboy Casanova. Will announce pregnancy results at the sale. Don't let this great cow slip by.

**SIRE:** J&R'S ENTERPRISE (GR GRAND UNLIMITED X BIG D'S TEXAS STAR)  
**DAM:** WIREGRASS VIRGINIA (WIREGRASS PHENOMENON X WIREGRASS KATHRINE)

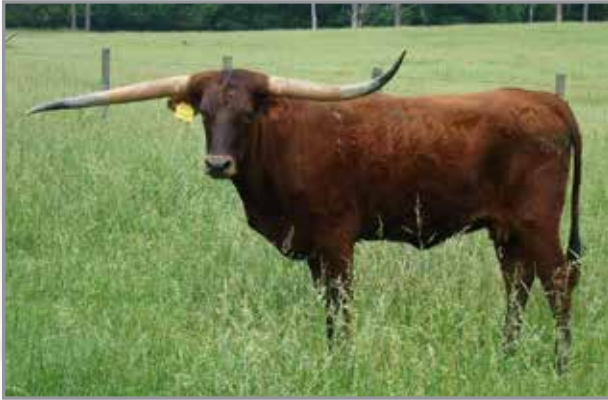




**35**

## VIRGINIA COWGIRL 1/15

Grove Cattle Company, Dan & Kristi Grove



**DOB:** 4/5/2015      **PH#:** 1/15      **REG:** 21412 (TLCA)  
**BREEDING:** Exposed to Hil 5 Sulley from 4/22/18 to 9/21/18

**COMMENTS:** Not OCV'd. Beautiful parker brown 3 year old that gets noticed. Her asymmetrical horn adds character and beauty. She is doing a great job with her first calf and is bred back to Hil 5 Sulley (JH Rurally Screwed x Bellhop). 63" TTT on 5/18 with a ton more total horn.

**SIRE:** GUTS AND GLORY (TOP CALIBER X GRASS ROOTS BIG EMPRESS)  
**DAM:** STAR SHOOTER (LWR KOJAK X WIREGRASS JADA)

**36**

## MM PRETTY TUFF GAL

M&M Cattle Company, Mark & Misty Flinchum



**DOB:** 4/2/2016      **PH#:** 61      **REG:** CI308522  
**BREEDING:** Exposed to The Profit from 6/16/18 to 9/21/18

**COMMENTS:** Tuff Gal is only the 2nd Jitter Z daughter to leave the farm! Tyson Leonard grabbed the 1st (MM Daughter Van Horne). Tuff Gal is also the first He's Pretty Tuff daughter to be sold. Power house genetics here folks and to top it off she's exposed to THE PROFIT!! It will be the first THE PROFIT progeny available to the public!

**SIRE:** HE'S PRETTY TUFF (COWBOY TUFF CHEX X BL RIO PRETTY 048)  
**DAM:** RRR MISS JITTER Z 817 (RRR GROUND ZERO X RRR JITTER SMOKE 531)

**37**

## DUNN RIO VOTER

Hudson Longhorns, Bill & Elizabeth Hudson



**DOB:** 5/26/2009      **PH#:** 913      **REG:** CI269807  
**BREEDING:** Exposed to HL Double Barrel from 11/24/17 to 5/14/18

**COMMENTS:** Dunn Rio Voter is a beautiful brindle Rio Bravo Chex daughter. She measures over 72" TTT and she did a good job raising a 2017 bull calf. She was exposed to HL Double Barrel on 11/24/17 to 5/14/18. He is our black and white **Hubbell's 20 Gauge** son that we are so high on.

**SIRE:** RIO BRAVO CHEX (JP RIO GRANDE X BL SUNSHINE TARI)  
**DAM:** DUNN VOTING (NITROUS OXIDE X JENIFER'S VOTE)



**SL SPICE**  
Gary Hershberger

**38**

**DOB:** 2/23/2007      **PH#:** 16/07      **REG:** 250630  
**BREEDING:** AI'd to **Delta Lucky Ace** on 5/18/18

**COMMENTS:** Spice is an easy going cow to have around and works great in the corral. I'm doing embryos and keeping young stock and Spice is a cow I can part with now. Kept her calf and will be bred back to Ace. 74.5" TTT on 5/18/18



**SIRE:** J.R. PREMIUM (PAY CHECK BL X DUMPLIN 04)  
**DAM:** J.R. SAGE (J.R. 20-20 X OSAGE DIXIE PRINCESS)

**GINGER BREAD'S COMPANY**  
White Pines Ranch, Scott & Sandy Hughes

**39**

**DOB:** 5/15/2010      **PH#:** 07/10      **REG:** C1273430  
**BREEDING:** Exposed to **Cowboy Catchit Chex** from 5/4/18 to 7/1/18

**COMMENTS:** This is a great cow. You will love her. Twist is hard to come by. This cow milks full term. No holes, unique horns, and raises a wonderful cow. Bred to Cowboy Catchit Chex. Herd Reduction continues!



**SIRE:** IN THE COMPANY OF STARS (**WS JAMAKIZM** X J. R. JOYFUL)  
**DAM:** BT GINGER BREAD GIRL (GINGER BREAD MAN X PEACHY MOVADO)

**5D LINCOLN'S ROSE**  
5D Ranch, Dan & Denise Huntington

**40**

**DOB:** 8/9/2015      **PH#:** 57      **REG:** 271164  
**BREEDING:** Exposed to **5D AXMAN** from 6/20/2018 to Sale Date

**COMMENTS:** A great looking HL Lincoln heifer I hate to let go, out of one of my most productive cows Roses Overalls and HL Lincoln. She's being exposed to 4 time futurity champ 5D Axman for a homerun spring calf!



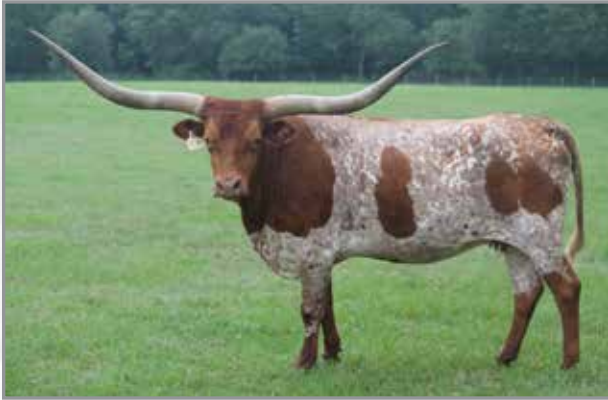
**SIRE:** **HL LINCOLN** (**JP RIO GRANDE** X JBM SITTIN DELUGE)  
**DAM:** ROSE'S OVERALLS TCB (JH RINGO JIM X RUTLEDGE'S RED ROSE)





## SPECKLE IRON

Home Branch Ranch, Ricky McLeod



**DOB:** 4/10/2011      **PH#:** 11    **REG:** CAI289146  
**BREEDING:** Exposed to **JH Monika's Son** from 10/15/17 to 3/15/18

**COMMENTS:** Speckle Iron is one of those magical daughters of the 84" TTT Drag Iron bull. She has the size and structure to go along with her breeding to JH Monika's Son (who's out of Lady Monika BL who produced 90" TTT BL Monika) and surpassed the 80" TTT mark before his 3rd birthday. This cow herself is 79.375" TTT. She's got all the great things you look for in a mama cow, production and milking ability. Her 2016 heifer is one of the biggest bodied heifers you'll ever see with a great twisting horn set. Follow the pedigree, see the horn, get the production.

**SIRE:** DRAG IRON (WS JAMAKIZM X SHINING VICTORY)  
**DAM:** SANDHILL SPECKLE (MOULA REBEL 26-4 X SANDHILL-99)



## HUBBELLS RIO GLEAM

Sunhaven Farms, Jay & Suzi Wachter



**DOB:** 7/9/2010      **PH#:** 021    **REG:** CI271643  
**BREEDING:** **Hubbells 20 Gauge**- Al'd on 1/11/18

**COMMENTS:** A Hubbell bred Rio Grande on the top side and Johnnie Hoffman breeding on the bottom. This cow is a tank well over 70" TTT and bred to 20 Gauge for a fall calf. Sunhavenlonghorns.com

**SIRE:** JP RIO GRANDE (J.R. GRAND SLAM X TX W LUCKY LADY)  
**DAM:** HUBBELLS MISS GLEAM (WATSON 83 X DELTA GLEAM)



## CAROLINA FLUSH

Carolina Cartel



**DOB:** 4/8/2014      **PH#:** 4/5    **REG:** CI291980  
**BREEDING:** Exposed to **Cowboy Catchit Chex** from 5/4/18 to 7/15/18 and Enevitale from 9/1/17 to 12/20/17

**COMMENTS:** This will be a big horned cow very soon. Her mother is over 80" TTT. Good milker and drop dead gorgeous. You will do well to be the new owner. Just four years old.

**SIRE:** WF POKER (COWBOY CHEX X CHOPSTICK)  
**DAM:** BLANCOS ISABELLE (RIO BLANCO CHEX X IZZIE BCB)



## ORR CRYSTAL TEQUILA

Bilgrien Cattle Company, Dave Bilgrien



**DOB:** 3/7/2017      **PH#:** 40      **REG:** CI306582  
**BREEDING:** Sells unexposed.

**COMMENTS:** This heifer is smooth bodied, correct, and feminine. She has a good lateral horn set and a stellar pedigree. I left her open so you could take her home and breed her to the bull of your choice.



**SIRE:** OF IRON HIDE (SITTIN BULL X 5D IRON ROSE)  
**DAM:** ORR MAVIS STAR (CARLOS X OF SHILOHS STAR)

## TL ROSEBUD WHISKEY

5D Ranch, Dan & Denise Huntington



**DOB:** 10/31/2013      **PH#:** 301      **REG:** CI1286728  
**BREEDING:** Exposed to **HL LINCOLN** from 6/20/2018 to Sale Date

**COMMENTS:** A great looking young cow, HCR Topside and O'Dell breeding on the bottom. Bred to HL Lincoln for an awesome spring calf!



**SIRE:** LC WHISKEY (LC BLADEN X FANCY REWARD)  
**DAM:** D/O PRINCESS DIANNA (EMPEROR X R T DIAMOND ROSEBUD)

## RZ EASY MONEY

G&G Longhorns, Ann Gravett



**DOB:** 8/27/2010      **PH#:** 20/0      **REG:** 261183  
**BREEDING:** Exposed to **Sniper** from 6/25/18 to 9/21/18

**COMMENTS:** We've loved these genetics so much that we owned two full sisters. Rio shouldn't need any introduction. Roundup's Wendy is a huge horned Roundup daughter who we had great success with crossing back with HCR genetics. That's where Sniper comes into play. Easy Money is bred to our 84" TTT+ black and white Sniper bull for a spring 2018 calf. She's a milking machine. We're retaining two of her heifers, both of who are some of the largest of their calf crops. This brindle beauty will be a great addition to anyone's herd.



**SIRE:** **JP RIO GRANDE** (J.R. GRAND SLAM X **TX W LUCKY LADY**)  
**DAM:** ROUNDUP'S WENDY (ROUNDUP X HUBBELLS WINCHEX)





**NOTES:**

---

---

---

---

---

---

---

---

---

---

**THANK YOU FOR ATTENDING OUR 2018 SALE!**

# REMAINING 2018 CONSIGNMENT SALES



**TLBAA HORN  
SHOWCASE**

OCT. 4-6 | LAWTON, OK



**FINAL FOUR  
FUTURITY &  
HEIFER SALE**

OCT. 19-21 | GLEN ROSE, TX



**ITLA  
CONVENTION  
AND SHOW**

OCT. 25-27 | ENID, OK



# Thank You East Coast Longhorn Classic for utilizing Hired Hand Live for your Sale.

For instructions on how to use Hired Hand Live please see the pages in the front of your sale catalog.

ARE YOU  
UTILIZING ALL  
OF THE FREE  
SERVICES  
WE OFFER?



## REPORTS, DATA & TRENDS

[www.HiredHandLive.com](http://www.HiredHandLive.com) is also home to pre- and post-sale data and reports that can aid in your breeding knowledge. Free to all visitors.



## MOBILE MARKETING

Receive text messages, including sale results, for free. Simply text the phrase "website.longhorns" to the number 779-48 and follow the prompts. You will also receive occasional updates, news and paid ads.

## HIRED HAND SEARCH

You can search all of our customers website at once for Longhorns by TTT, State, Sale Price Sire, Dam and more.

Just visit [HiredHandSoftware.com/Search](http://HiredHandSoftware.com/Search) and click through the easy-to-use form.



## BREEDER BEACON

Download our mobile app for free from your iPhone or Android device.

It is also free to be listed. You do not have to be a Hired Hand website customer. Visit [www.BreederBeacon.com](http://www.BreederBeacon.com) to learn more.



## TIPS, ARTICLES & E-MAILS

Join our email list, follow us on Social Media and read our Blog for free tips and advice on all things technology and Longhorn related. While our private customers group is indeed reserved for those breeders utilizing our website services, we still share a wealth of information that can help with your internet marketing and website IQ. We can be found on:

*Facebook, Instagram, Twitter, Snapchat, Pinterest & LinkedIn*



## HIRED HAND LIVE

Our internet bidding and viewing platform is free and easy to use. If you wish to only view the sale, simply open up your browser pointed to [www.HiredHandLive.com](http://www.HiredHandLive.com).

If you wish to bid or buy on-line complete the registration process which includes credit card verification.

There is never a buyer's premium. Absentee and max bids are always private.

CONTACT  
US TODAY  
IF WE CAN  
ASSIST YOU  
IN ANY OF  
THESE AREAS.

HIREDHANDSOFTWARE.COM



# Terms & Conditions

## TERMS & CONDITIONS:

All cattle sell under the terms and conditions listed in this catalog.

## PAYMENT:

Cash or check at end of sale

## LIABILITY:

All persons attending the sale do so at their own risk. The sale host and/or the sale management and/or consignors assume no liability for accidents, theft or damages on the sale facility site.

## HEALTH TERMS:

All cattle selling will be accompanied with a valid health certificate to be shipped anywhere in the continental United States.

## BIDDING:

Each animal will be sold to the highest bidder with reserve.

## BIDDING DISPUTES:

The auctioneer in charge will settle any disputes as to bids, and his decision on such matters shall be final.

## TERMS:

Terms of the sale are cash or check to the clerk at the conclusion of the sale. Checks are made payable to the East Coast Longhorn Classic Sale.

## POSSESSION:

Immediately after the animal is sold, it will be the sole risk and responsibility of the buyer thereof, but possession cannot be obtained until payment is made.

## CERTIFICATION:

A certificate of registration will be furnished and transferred to the purchaser on each lot in the sale, including calves at side.

## HEALTH:

Bidders should consider individual state requirements before purchasing.

## GUARANTEE:

Breeder guarantees are strictly between the individual consignor and the purchaser at the sale. All calves at side are given to the purchaser free and carry no guarantee.

## NOTICE:

The purchaser must look to the seller for fulfillment of all guarantees and representations made hereunder.

## PEDIGREES:

The seller has furnished the information on the pedigrees of the animals announced.

## ANNOUNCEMENTS:

All announcements from the auctioneer block shall take precedence over information printed in the catalog.

## CONTRACT:

The above terms and guarantees shall constitute a contract between the buyer and seller of each animal sold. No cattle may be loaded up until after the sale. All cattle must be out by noon Sunday, Sept. 23, 2018.

## BUYER RESPONSIBILITY:

Prospective buyers or bidders at the sale should listen carefully to all announcements made from the auction block by the auctioneer, pedigree reader, or seller on each animal that is sold. Buyers should acquaint themselves with terms concerning the breeder status, fertility, and health papers on each animal sold. It is the responsibility of the buyer to be aware of health regulations for transportation of animals into the state of their residence. By doing so, a buyer can save himself many problems and also enable himself to be more competent and qualified buyer.



**EAST COAST**  
*Longhorn*  
*Classic*

**TRAILERS GOING  
ALL OVER,  
CATCH A RIDE  
AT AN  
EXTREMELY  
DISCOUNTED RATE.**

Contact *Bear Davidson*  
540-687-0050  
beardavidson@ymail.com



# 5

**RANCH**  
GRESHAM, WI  
5DRANCH.ORG  
715.853.7608



## HUNTINGTON SALES & FUTURITY SERVICES

### PROUD TO AUCTIONEER THESE 2018 SALES AND FUTURITIES

**CHERRY BLOSSOM SALE, CULPEPER, VA**

CONTACT CHASE VASUT 512.917.8654

**MILLENNIUM FUTURITY & SALE, OVERBROOK, OK**

CONTACT CHRISTY RANDOLPH 512.360.4299

**GREAT NORTHERN LONGHORN CLASSIC, MONTELLO, WI**

CONTACT DAN HUNTINGTON 715.853.7608

**FEY RANCH SALE, YAMHILL, OR**

CONTACT DANIEL FEY 503.662.4820

**ROCKY MOUNTAIN WINCHESTER FUTURITY, COLORADO SPRINGS, CO**

CONTACT MARLENE REYNOLDS 719.510.2151

**EAST COAST LONGHORN CLASSIC, CULPEPER, VA**

CONTACT BEAR DAVIDSON 540.687.0050

**TLCA FINAL 4 FUTURITY & SALE, GLEN ROSE, TX**

CONTACT CHASE VASUT 512.917.8654

**TLBAA HORN SHOWCASE FUTURITY**

CONTACT JOHNNY HICKS 269.721.3473

**ITLA CHAMPIONSHIP HEIFER SALE, ENID, OK**

CONTACT MIKE TOMEY 812.583.4622

**TX #17891 | IN #AU11700080 | WI #2479 | VA #2907004502**





**BEAR DAVIDSON**  
3333 Jacks Shop Rd,  
Rochelle, VA 22738